



# HVAC SPARE PARTS CATALOGUE



## SPECIAL VEHICLES



**KNORR-BREMSE**

SPC30622

**SIGMA**  
BUILT FOR THE TOUGHEST AIR CONDITIONS

The SIGMA H SERIES are high performance compact air conditioning compressor systems driven by an hydraulic motor.

They have been designed to meet the requirements of the SIGMA industrial range of products while maintaining quiet and smooth operation.

They are available as either standalone assemblies, packaged in an easy to fit housing inclusive of basic controls, or integrated into the SIGMA E & T SERIES.

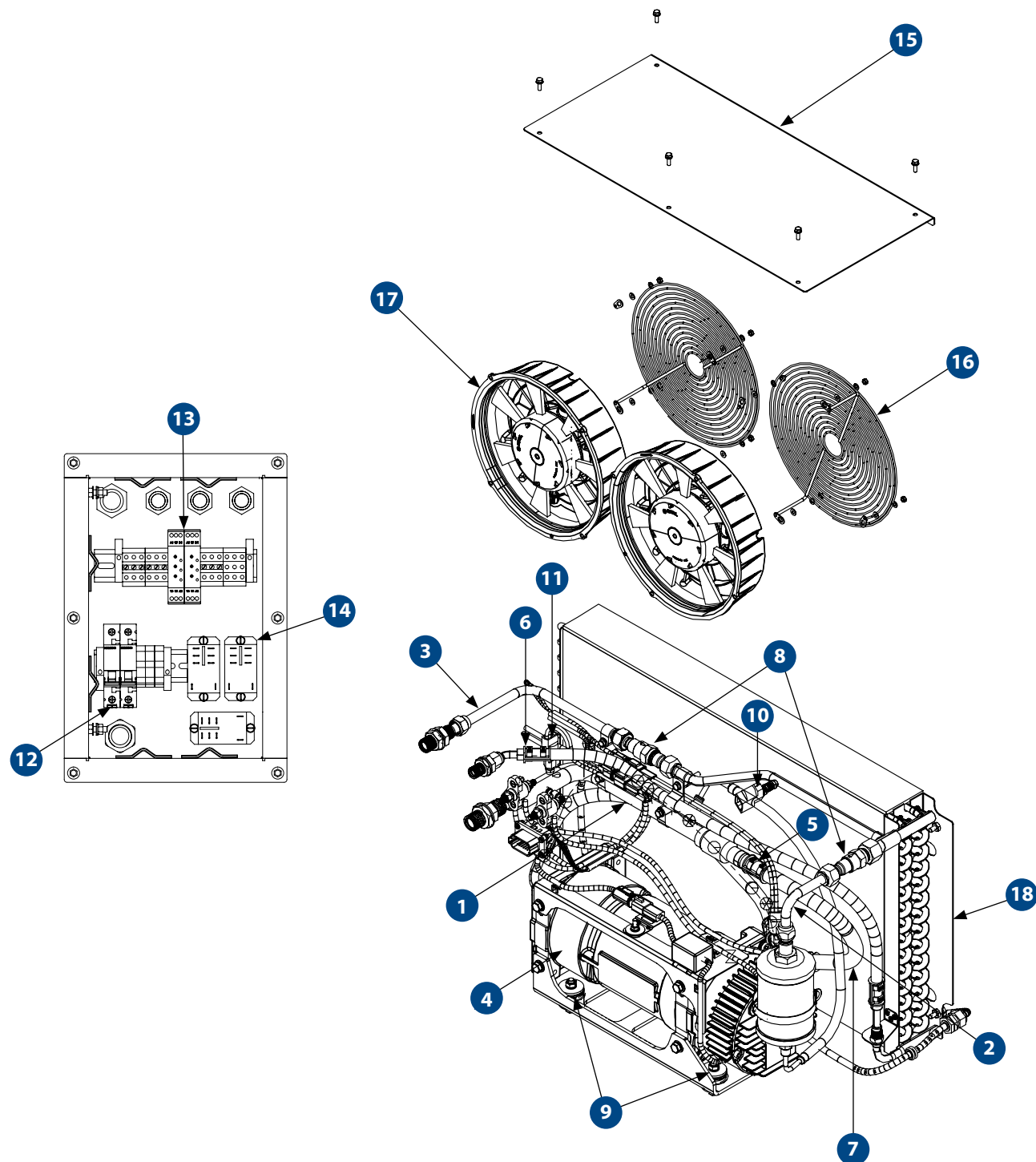
# H SERIES



# HCF6BX3

## SIMPLIFIED ANTI IDLE

**H0269011**  
Floor Mounted Condenser 24VDC



## SPARE PARTS

PART NO.	DESCRIPTION	QTY
1 AS3993048	SUCTION LINE ASSEMBLY - BULKHEAD TO COMP	1
2 AS3993052	CHECK VALVE TO OIL SEPARATOR ASSEMBLY	1
3 AS3993054	DISCHARGE ASSEMBLY - BULKHEAD TO CHECK VALVE	1
4 AU2961001	COMPRESSOR 24VDC	1
5 AU5551001	OIL SEPARATOR HOSE	1
6 AU5551009	HOSE ASSEMBLY - DISCHARGE ECF6BX1	1
7 AU5551010	HOSE ASSEMBLY - SUCTION ECF6BX1	1
8 H0014480	VALVE CHECK 1/2" MF	2
9 H0102227	VIB MNT SCHR35 RUBBER 55SH	4
10 H0148597	HIGH PRESSURE SWITCH ASSEMBLY HARNESS	1
11 H0152017	ASSEMBLY LOW PRESSURE SWITCH	1
12 AU641119	CIRCUIT BREAKER 16A 1 POLE	2
13 AU672500	TIMER ON DELAY 24VDC 0.1SEC-100HR 1 POLE	2
14 H0269190	RELAY FOR 24V DC	3
15 H0279106	TOP COVER PANEL ASSEMBLY	1
16 H0279389	FAN GUARD ASSEMBLY	2
17 H0281808	FAN ASSEMBLY BRUSHLESS 24VDC DIA 305MM	2
18 H0017305	CONDENSER COIL	1

## SPECIFICATIONS

	METRIC	IMPERIAL
<b>Cooling Capacity</b> (Remote off-engine compressor)	5 kW	17060 BTU
<b>Cooling Capacity</b> (Integrated DC Compressor)	3.6 kW	12280 BTU
<b>Fan Speeds</b>	1	1
<b>Air Flow</b>	670 l/s	1419 CFM
<b>Power Supply</b>	24VDC	24VDC
<b>Current Draw</b>	70 A	70 A
<b>Refrigerant</b>	R134a	R134a
<b>Maximum Ambient Temperature</b>	54°C	129°F
<b>Weight (nominal)</b>	60 kgs	132.2 lbs
<b>Technical Manual Reference</b>	SM508-3993	SM508-3993
<b>Dimension (L X W X H)</b>	752mm X 429mm X 480mm	29.6in X 16.8in X 18.8in

## MAINTENANCE

3 YEARS / 10,800 HOURS	
<b>AU2961001</b>	COMPRESSOR 24VDC
<b>H0102227</b>	VIB MNT SCHR35 RUBBER 55SH
<b>H0281808</b>	FAN ASSEMBLY BRUSHLESS 24VDC DIA 305MM

Please contact SIGMA for more information including details on an overhaul scope and interval.  
Maintenance periods and scope are dependent on application and site conditions, and are to be used as a guide.

## COMPANION ITEMS

PART NO.	DESCRIPTION
<b>EC22H4</b>	HOODLINER EVAPORATOR COMP 24V
<b>TFR7BX2</b>	ROOFTOP EVAPORATOR 24V (7KW)
<b>EFF4BX1</b>	FLOOR MOUNTED 4KW EVAPORATOR

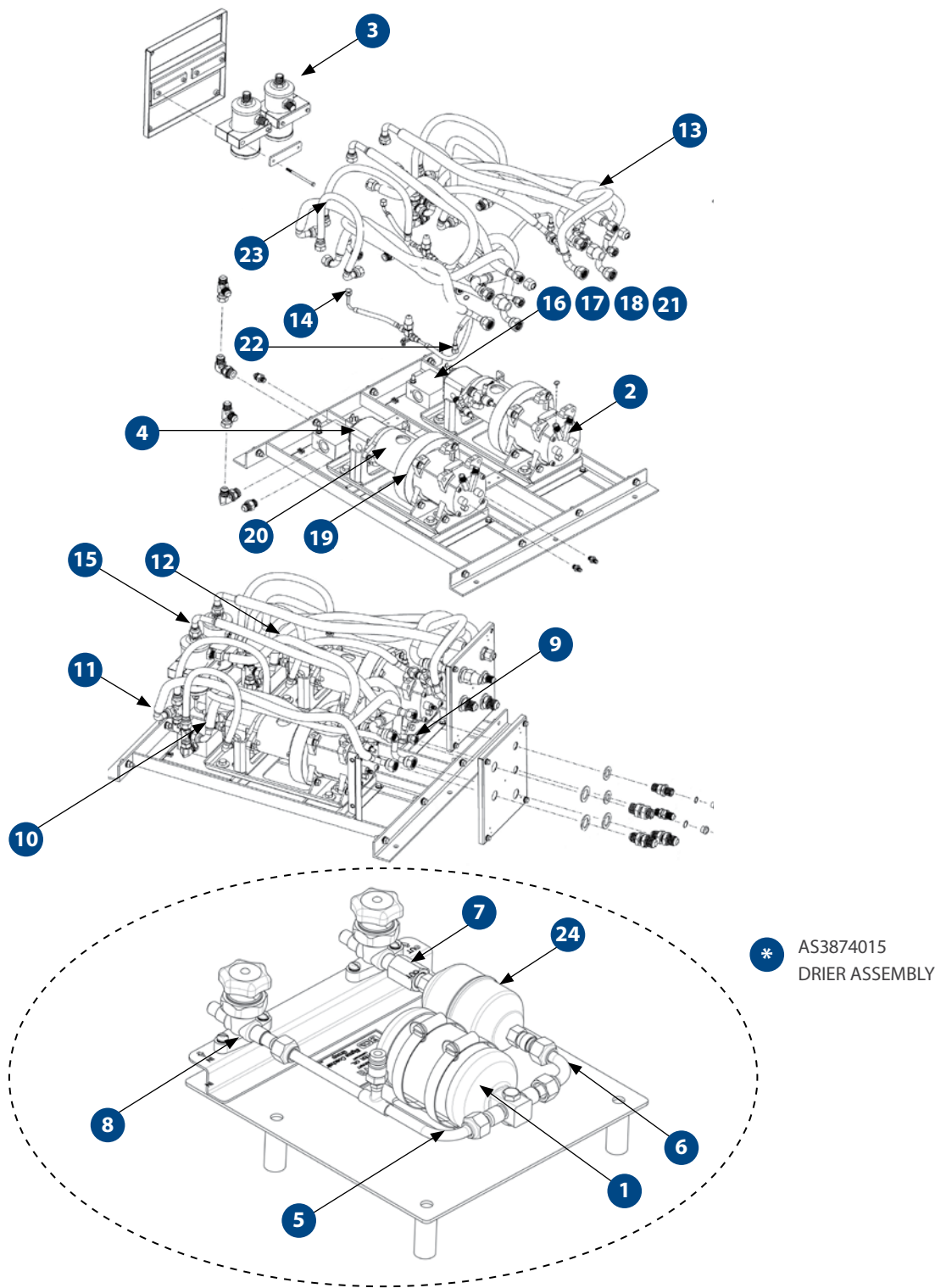




# HDC400

## DUAL HYDRAULIC COMPRESSOR ASSEMBLY

HDC400  
Dual Hydraulic Compressor Assembly (Floor Mounted) 24V



# SPARE PARTS

PART NO.	DESCRIPTION	QTY
1	AU531411 RECEIVER DRIER 3/8" 24UNF 165MM HIGH	2
2	AU270019E COMPRESSOR VMO NO CLUTCH	2
3	AU270344 OIL SEPARATOR 7/8" 14UNF 0.52 L/MIN	2
4	AU340000 MOTOR HYDRAULIC DRIVE 14CC	2
5	H0098531 LIQUID LINE ASSEMBLY - VALVE TO RECEIVER	2
6	H0098529 LIQUID LINE ASSEMBLY - RECEIVER TO DRIER	2
7	AU512406 UNION 3/8" FF X 3/8" FF	2
8	AU517004 VALVE 3/8" MF 2 WAY	4
9	AS3874501 HOSE - HYDRAULIC MOTOR DRAINAGE	2
10	AS3874502 HOSE - SOLENOID VALVE IN	2
11	AS3874503 HOSE - SOLENOID VALVE OUT	2
12	AS3874504 HOSE - HYDRAULIC COMPRESSOR DISCHARGE	2
13	AS3874505 HOSE - HYDRAULIC COMPRESSOR SUCTION	2
14	AS3874506 HOSE - ISOLATION VALVE TO OIL SEPARATOR	2
15	AS3874507 HOSE - DISCHARGE TO OIL SEPARATOR	2
16	AU522000 SOLENOID VALVE CARTRIDGE SIZE 12	2
17	AU522003 SOLENOID VALVE BODY SIZE 12 3/4" BSPP	2
18	AU522001 SOLENOID VALVE COIL	2
19	AS509746 ADAPTOR PLATE COMPRESSOR	2
20	AS509727 COMPRESSOR MOTOR HOUSING	2
21	AU631452 PLUG SOLENOID VALVE COIL 24VDC	2
22	AS160182 HP FLEXIBLE HOSE ASSEMBLY	2
23	AS3754116 HOSE - HYDRAULIC MOTOR IN	4
24	658004A INLINE DRIER	2
	AU230644 VALVE SERVICE 5/8" WITH ACCESS PORT	2
	AU523655 HIGH PRESSURE SWITCH 1/4" FF 2415kPa	2
	AU523365 LOW PRESSURE SWITCH 1/4" FF 205kPa	2
	AU230C011 VALVE 1/2 TUBE #8 R134A DISCHARGE	2
	AU517202 PCAV 1/4" MF	2
	H0130377 ADAPTOR SHAFT AND MALE COUPLING	2
	AU851590 TOGGLE CLAMP RUBBER	4
	AU519080 INSERT M O-RING TO MF #10	2
	AS509742 COUPLING MALE MOTOR	2
	AS509744 COUPLING FEMALE	2
	AU512C067 BULKHEAD FITTING O-RING 5/8"	2
	AU517502 VALVE ACCESS 1/4" 1/4" & 3/8" OD SOLDER	2
	AU519074 ADAPTOR 134A 1/4" HIGH SIDE RED	2
	AU519099 INSERT M O-RING TO MF #12	2

# SPECIFICATIONS

	METRIC	IMPERIAL
Power Supply	24VDC/Hydraulic	24VDC/Hydraulic
Refrigerant	R134a	R134a
Technical Manual Reference	SM4858-3874	SM4858-3874
Dimension (L X W X H)	760mm X 1055 mm X 1230mm	29.9in X 41.5in X 48.4in

# MAINTENANCE

ANNUAL / 3,600 HOURS	
AU230644	VALVE SERVICE 5/8" WITH ACCESS PORT
AU531411	RECEIVER DRIER 3/8" 24UNF 165MM HIGH
3 YEARS / 10,800 HOURS	
AU523655	HIGH PRESSURE SWITCH 1/4" FF 2415kPa
AU523365	LOW PRESSURE SWITCH 1/4" FF 205kPa
AU270019E	COMPRESSOR VMO NO CLUTCH
AU230C011	VALVE 1/2 TUBE #8 R134a DISCHARGE

Please contact SIGMA for more information including details on an overhaul scope and interval.  
Maintenance periods and scope are dependent on application and site conditions, and are to be used as a guide.

# COMPANION ITEMS

PART NO.	DESCRIPTION
TFC8BX1	Electric Condenser
TCF8BX2	Electric Condenser
EB9P4X	Pressuriser



## **KNORR BREMSE AUSTRALIA Pty Ltd**

Incorporating SIGMA Air Conditioning

23 – 29 Factory Street

Granville NSW 2142

Australia

**Customer service:** 1300 643 643

(+61) 2 8863 6500

**Email:** mid.aus@sigma-hvac.com

W W W . S I G M A - H V A C . C O M

### **Australia:**

Factory St, Granville, Sydney, Australia

Boundary Road, Darra, Brisbane, Australia

Enterprise Street, Paget, Mackay, Australia

Colin Jamieson Drive Welshpool, Australia

### **United States:**

Arthur Peck Drive, Westminster MD, USA

### **India:**

Delhi-Mathura Road, Palwal, Haryana, Delhi, India

### **China:**

Jingui Road, Wuxi Jiangsu Province, China



**SIGMA**

AUTHORISED SIGMA  
DEALER



**SIGMA**

BUILT FOR THE TOUGHEST AIR CONDITIONS