

PRESSURISERS

Developed for environments containing gaseous or fibrous contaminants, the filter/pressuriser systems contain upto five (5) stages of filtration. The first two (2) stages of filtration efficiently remove sub-micron particulate from outside air, following by stage 3 customised filtration media to remove the specific gaseous or fibrous contaminant and finally stage 5 HEPA filtration.

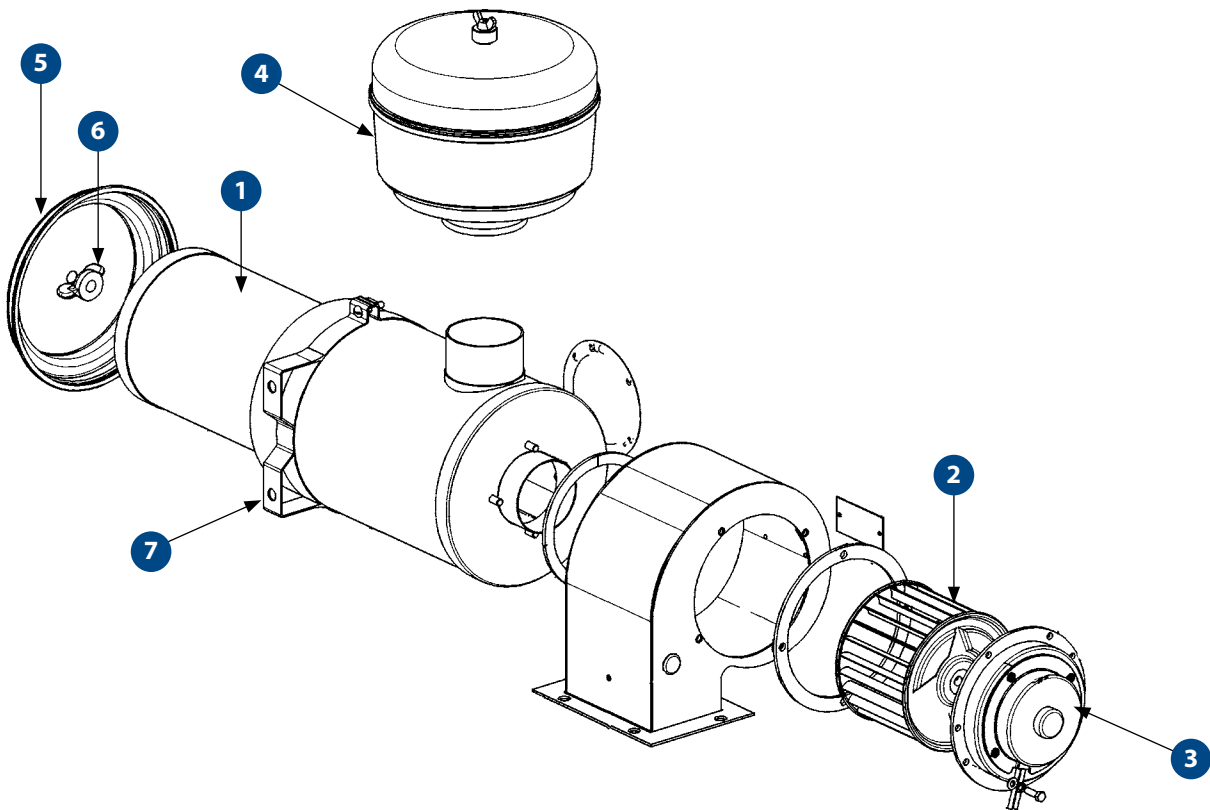


EB9P*
PRESSURISER

EB9P2*
Fresh Air Pressuriser 30 l/s 12V

EB9P4*
Fresh Air Pressuriser 30l/s 24V

* HVAC obsolete, spares support only



SPARE PARTS

PART NO.	DESCRIPTION	QTY
1 AU460706	FILTER ASSEMBLY ROUND 133MM - STANDARD	1
AU460080	FILTER CART ENDURANCE FVV50B	1
* Note: Sites which have both EB9P4 and EB9P4X can use KNHV80005 to suit both unit		
2 AU410337	BLOWER 120D x 89W x 5/8 COUNTER CLOCKWISE SINGLE INLET	1
3 UE327	MOTOR 70W 12VDC PANCAKE (EB9P2)	1
H0175266	MOTOR 70W 24VDC ASSEMBLY (EB9P4)	1
4 AU460725	FILTER PRE-CLEANER 186MM - STANDARD	1
5 AU460709	FILTER END CAP	1
6 AU460721	FILTER WING NUT	1
7 AU870001	MOUNTING BAND AIR CLEANER 6.5" DIA	1
AU460707	FILTER END COVER (PREVIOUS DESIGN)	1
AU460708	FILTER CAP RUB BAFFLE (PREVIOUS DESIGN)	1
S3750100	SEAL GASKET MOTOR	1
S3750102	SEAL GASKET CANISTER	1

SPECIFICATIONS

	METRIC	IMPERIAL
Fan Speeds	1	1
Fresh Air	30 l/s	64 CFM
Power Supply	12V / 24V	12V / 24V
Current Draw	3 A / 1.5 A	3 A / 1.5 A
Weight (nominal)	8.0 Kg	17.6 lbs
Technical Manual Reference	SM496-5065	SM496-5065
Dimension L X W X H	462mm X 364mm X 192mm	18.2in X 14.3in X 7.6in

MAINTENANCE

MONTHLY / 300 HOURS	
AU460706	FILTER ASSEMBLY ROUND 133MM - STANDARD
AU460080	FILTER CART ENDURANCE FVV50B
KNHV80005*	FILTER KIT
ANNUAL / 3,600 HOURS	
UE327 (EB9P2)	MOTOR 70W 12VDC PANCAKE
H0175266 (EB9P4)	MOTOR 70W 24VDC ASSEMBLY
3 YEARS / 10,800 HOURS	
AU410337	BLOWER 120D x 89W x 5/8 COUNTER CLOCKWISE SINGLE INLET
AU460725	FILTER PRE-CLEANER 186MM - STANDARD
Please contact SIGMA for more information including details on an overhaul scope and interval. Maintenance periods and scope are dependent on application and site conditions, and are to be used as a guide.	



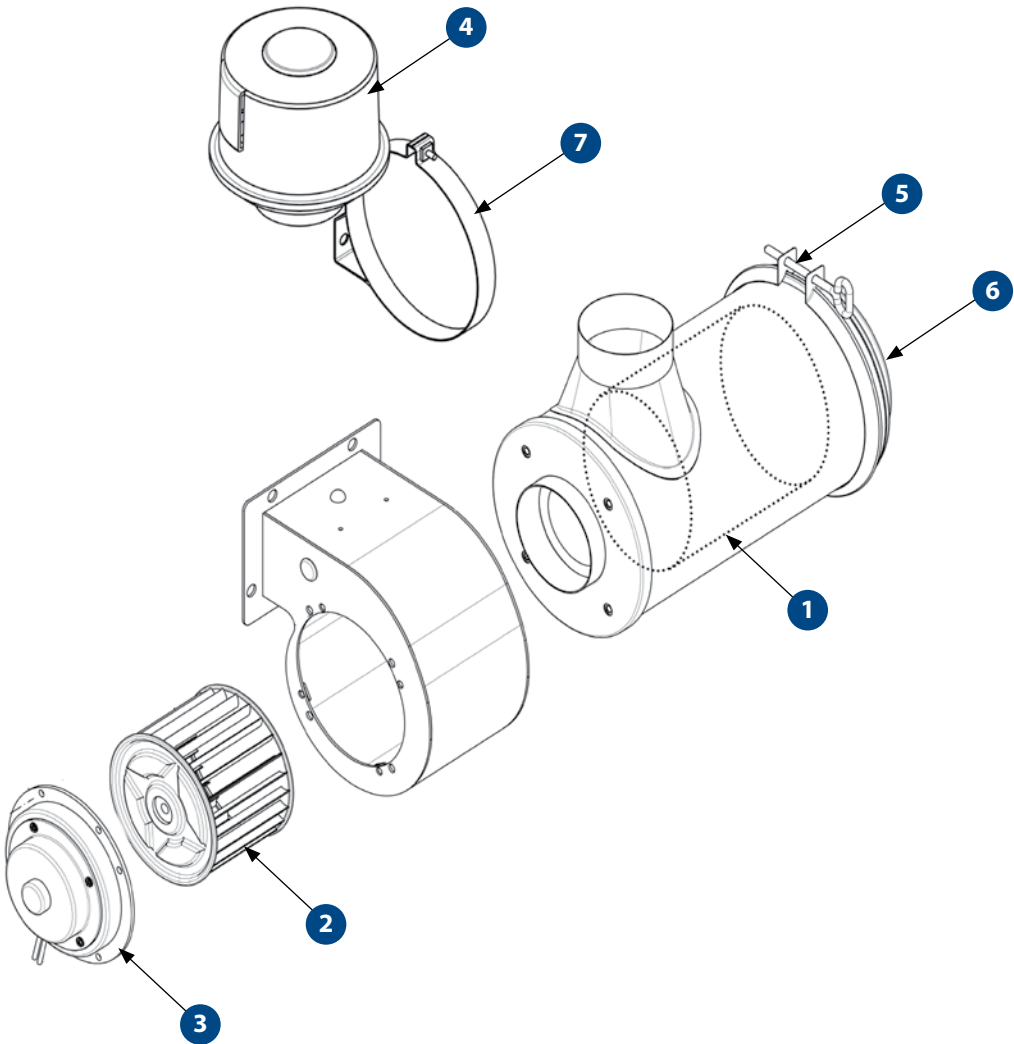
EB9P2X / 4X

PRESSURISER

EB9P2X
Fresh Air Pressuriser 31 l/s 12V

EB9P4X
Fresh Air Pressuriser 31 l/s 24V

EB9P4XL
Fresh Air Pressuriser 35 l/s 24V



SPARE PARTS

PART NO.	DESCRIPTION	QTY
1 AU460083 AU460082	FILTER CARTRIDGE ENDURANCE (EB9P4X) FILTER CARTRIDGE ENDURANCE (EB9P4XL)	1 1
* Note: Sites which have both EB9P4 and EB9P4X can use KNHV80005 to suit both unit		
2 AU410337	BLOWER 120D x 89W x 5/8 COUNTER CLOCKWISE SINGLE INLET	1
3 UE327 H0175266	MOTOR 80W 12V FOR EB9P2X MOTOR 70W 24V ASSEMBLY FOR EB9P4X & EB9P4XL	1 1
4 AU460963	PRE CLEANER TS 3" INLET SMALL	1
5 H0056158	CLAMP ASSEMBLY 168MM INTERNAL DIAMETER	1
6 H0056157	COVER ASSEMBLY	1
7 AU870001	MOUNTING BAND AIR CLEANER 6.5" DIA	1

HEPA FILTRATION OPTION

PARTICULARS	DESCRIPTION
PART NO.	H0202671 (FOR EB9P2X & EB9P4X)
HEPA GRADE	H13
TEST STANDARD	EN 1822 or equivalent
FILTRATION EFFICIENCY	*99.95% for particles diameter 0.3 µm
FILTER DIMENSION	138mm OD x 292 mm

*on qualified cabins

SPECIFICATIONS

	METRIC	IMPERIAL
Fan Speeds	1	1
Fresh Air	31 l/s	65 CFM
Power Supply	12V / 24V	12V / 24V
Current Draw	6 A / 3 A	6 A / 3 A
Weight (nominal)	8.0 Kg	17.6 lbs
Technical Manual Reference	SM496-5065	SM496-5065
Dimension L X W X H	462mm X 364mm X 192mm	18.2in X 14.3in X 7.6in

MAINTENANCE

MONTHLY / 300 HOURS	
AU460083	FILTER CARTRIDGE ENDURANCE (EB9P4X)
AU460082	FILTER CARTRIDGE ENDURANCE (EB9P4XL)
KNHV80005	FILTER KIT
6 MONTHS / 1800 HOURS	
H0202671	H13 HEPA FILTER OPTION FOR EB9P2X & EB9P4X (FOR UPGRADED UNIT)
ANNUAL / 3600 HOURS	
UE327	MOTOR 80W 12V FOR EB9P2X
H0175266	MOTOR 70W 24V ASSEMBLY FOR EB9P4X & EB9P4XL
3 YEARS / 10,800 HOURS	
AU410337	BLOWER 120D X 89W X 5/8 CCW SI
AU460963	PRE CLEANER TS 3" INLET SMALL
Please contact SIGMA for more information including details on an overhaul scope and interval. Maintenance periods and scope are dependent on application and site conditions, and are to be used as a guide.	

COMPANION ITEMS

PART NO.	DESCRIPTION
H0202671	H13 HEPA FILTER OPTION FOR EB9P2X & EB9P4X
H0202677	HEPA UPGRADE KIT WITH PRESSURE MONITORING



FPS55B

FRESH AIR PRESSURISER UNIT

H0111416
Compact HEPA Filtration Pressuriser System 12 VDC

H0111417
Compact HEPA Filtration Pressuriser System 24 VDC

SPARE PARTS

PART NO.	DESCRIPTION	QTY
1	H0116836 FILTER 16 / 79ID x 206OD x 288H EN15695	1
2	AU460748 CENTRIFUGAL PRE-CLEANER	1
3	H0133899 2-1/2 INCH ADAPTOR	1
4	H0133903 24V MOTOR W / MOTOR MOUNTING	1
	H0133904 12V MOTOR W / MOTOR MOUNTING	1
5	H0133900 FILTER ACCESS PANEL, SERIES SS	1
6	H0133905 3 INCH INLET ADAPTOR	1

SPECIFICATIONS

	METRIC	IMPERIAL
Fan Speeds	1	1
Fresh Air	22 l/s	50 CFM
Power Supply	12V / 24V	12V / 24V
Current Draw	3 A / 1.6 A	3 A / 1.6 A
Weight (nominal)	20.0 Kg	44.0 lbs
Dimension L X W X H	400mm X 240mm X 370 mm	15.75in X 9.45in X 14.57in

MAINTENANCE

6 MONTHLY / 1800 HOURS	
H0116835	FILTER 16 / 79ID X 206OD X 288 H
H0116836	FILTER 16 / 79ID X 206OD X 288 H EN15695
ANNUAL / 3,600 HOURS	
AU460748	CENTRIFUGAL PRE-CLEANER
3 YEARS / 10,800 HOURS	
H0133903	24V MOTOR W / MOTOR MOUNTING
H0133904	12V MOTOR W / MOTOR MOUNTING

Please contact SIGMA for more information including details on an overhaul scope and interval.
Maintenance periods and scope are dependent on application and site conditions, and are to be used as a guide.

COMPANION ITEMS

PART NO.	DESCRIPTION
H0116835	FILTER 16 / 79ID x 206OD x 288H
H0133905	3 Inch Inlet Adaptor
KNHV90073	Generic site install kit

HEPA FILTRATION OPTION

PARTICULARS	DESCRIPTION
PART NO.	H0116836
HEPA GRADE	H13
FILTRATION EFFICIENCY	*99.95% for particles diameter 0.3 µm
FILTER DIMENSION	206 mm OD x 288 mm

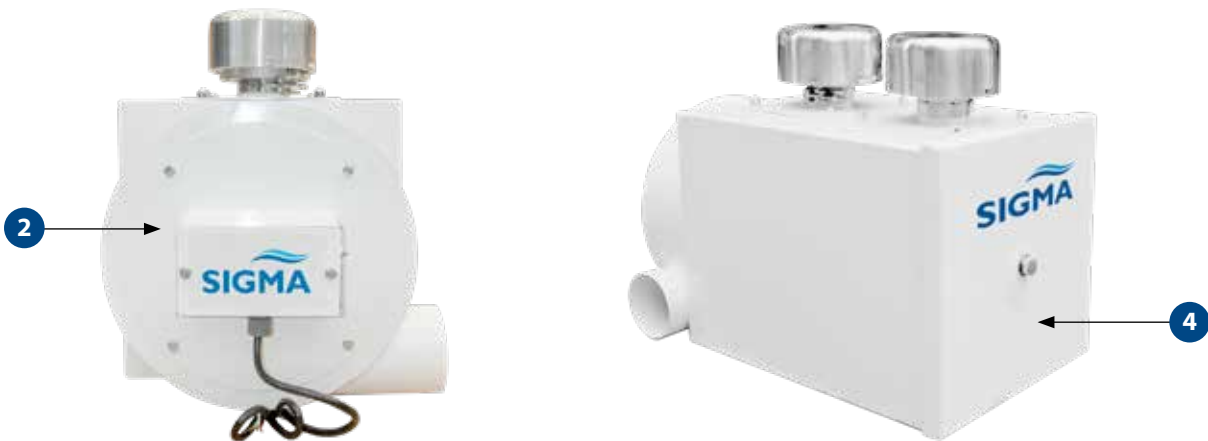
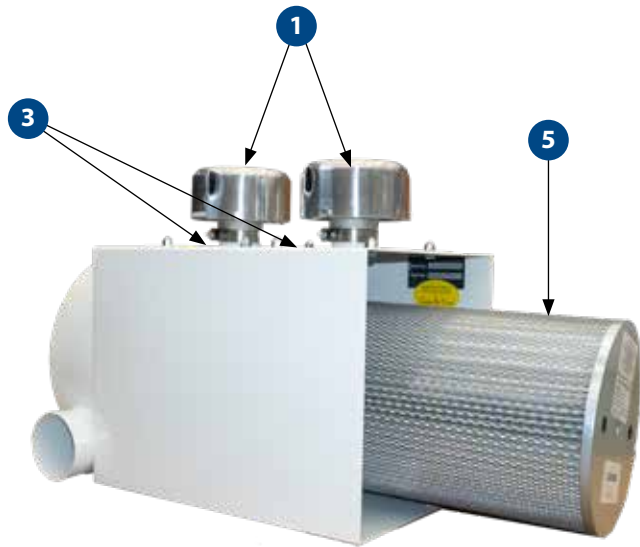
*on qualified cabins





FPS955-220VAC
COMPACT FILTRATION PRESSURISER

H0111418
Compact HEPA Filtration Pressuriser System FPS955
220VAC



SPARE PARTS

PART NO.	DESCRIPTION	QTY
1 AU460748	CENTRIFUGAL PRE-CLEANER 2-1/2 INCH ID	2
2 H0133898	220 V MOTOR AND MOUNTING PLATE	1
3 H0133899	2-1/2 INCH ADAPTOR	2
4 H0133901	FILTER ACCESS PANEL SERIS FPS955	1
5 H0116837	FILTER 16/87ID X 273OB X 417H (H13 GRADE)	1

HEPA FILTRATION OPTION

PARTICULARS	DESCRIPTION
PART NO.	H0116837
HEPA GRADE	H13
FILTRATION EFFICIENCY	*99.95% for particles diameter 0.3 µm
FILTER DIMENSION	273mm OD x 417 mm

*on qualified cabins

SPECIFICATIONS

	METRIC	IMPERIAL
Fan Speeds	1	1
Fresh Air	70 l/s	150 CFM
Power Supply	220 VAC	220 VAC
Weight (nominal)	40.0 Kg	88.0 lbs
Dimension L X W X H	400mm X 680mm X 400 mm	19.3in X 26.8in X 15.7in

MAINTENANCE

6 MONTHLY / 1800 HOURS	
H0116837	FILTER 16 / 87ID X 273OD X 417H (H13 GRADE)
ANNUAL / 3,600 HOURS	
AU460747	FILTER PRE-CLEANER 8.5" FULL VIEW
AU460748	CENTRIFUGAL PRE-CLEANER
3 YEARS / 10,800 HOURS	
H0133898	220 V MOTOR AND MOUNTING PLATE
Please contact SIGMA for more information including details on an overhaul scope and interval. Maintenance periods and scope are dependent on application and site conditions, and are to be used as a guide.	

COMPANION ITEMS

PART NO.	DESCRIPTION
AU460747	Centrifugal Pre-Cleaner 3 inch ID
H0133905	3 Inch Inlet Adaptor
KNHV90073	Generic site install kit

FVV50B

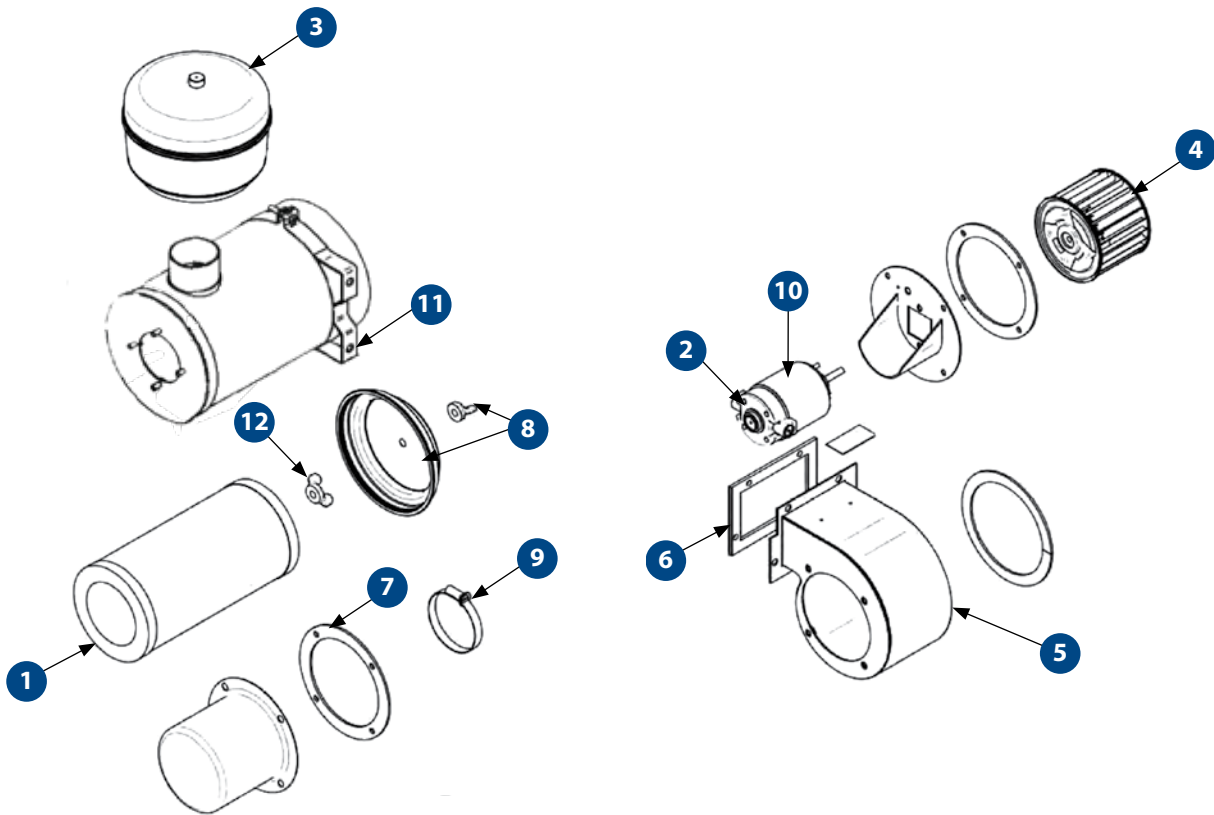
FRESH AIR PRESSURISER UNIT



FVV50B3
Fresh Air Pressuriser 30 l/s 24V
(Right hand version)



FVV50B4
Fresh Air Pressuriser 30 l/s 24V
(Left hand version)



SPARE PARTS

PART NO.	DESCRIPTION	QTY
1	AU460706 FILTER ASSEMBLY ROUND 133MM - STANDARD	1
2	AU320028 MOTOR BRUSH KIT - ASSEMBLY + HOLDER	1
3	AU460725 FILTER PRE-CLEANER 186MM - STANDARD	1
4	AU410605 BLOWER 120D x 89W x 5/16 SINGLE INLET FOR FVV50B3	1
	AU410337 BLOWER 120D x 89W x 5/8 SINGLE INLET FOR FVV50B4	1
5	AM184909 FRESH AIR BLOWER WITH ASSEMBLY	1
6	AU861071 SEAL FRESH AIR 153MM X 160MM TDR6	1
7	AU861072 GASKET FRESH AIR FAN 160MM	2
8	AU460709 FILTER END CAP	1
9	AU553626 CLAMP	1
10	AU320C007 MOTOR SINGLE SHAFT	1
11	AU870001 MOUNTING BAND AIR CLEANER 6.5" DIA	1
12	AU460721 FILTER WING NUT	1

SPECIFICATIONS

	METRIC	IMPERIAL
Fan Speeds	1	1
Air Flow	30 l/s	64 CFM
Power Supply	24VDC	24VDC
Current Draw	3 A	3 A
Weight (nominal)	20.0 Kg	44.0 lbs
Dimension L X W X H	550mm X 200mm X 357 mm	21.7in X 7.9in X 14.1in

MAINTENANCE

MONTHLY / 300 HOURS	
AU460706	FILTER ASSEMBLY ROUND 133MM - STANDARD
AU460080	FILTER CARTRIDGE ENDURANCE FVV50B (FOR UPGRADTED UNIT)
AU320028	MOTOR BRUSH KIT - ASSEMBLY + HOLDER
ANNUAL / 3,600 HOURS	
AU320C007	MOTOR SINGLE SHAFT
3 YEARS / 10,800 HOURS	
AU460725	FILTER PRE-CLEANER 186MM - STANDARD
AU460964	PRE-CLEANER TS 2.5" INLET SMALL
AU410605	BLOWER 120D x 89W x 5/16 CLOCKWISE SINGLE INLET (FVV50B3)
AU410337	BLOWER 120D x 89W x 5/8 COUNTER CLOCKWISE SINGLE INLET (FVV50B4)
Please contact SIGMA for more information including details on an overhaul scope and interval. Maintenance periods and scope are dependent on application and site conditions, and are to be used as a guide.	

COMPANION ITEMS

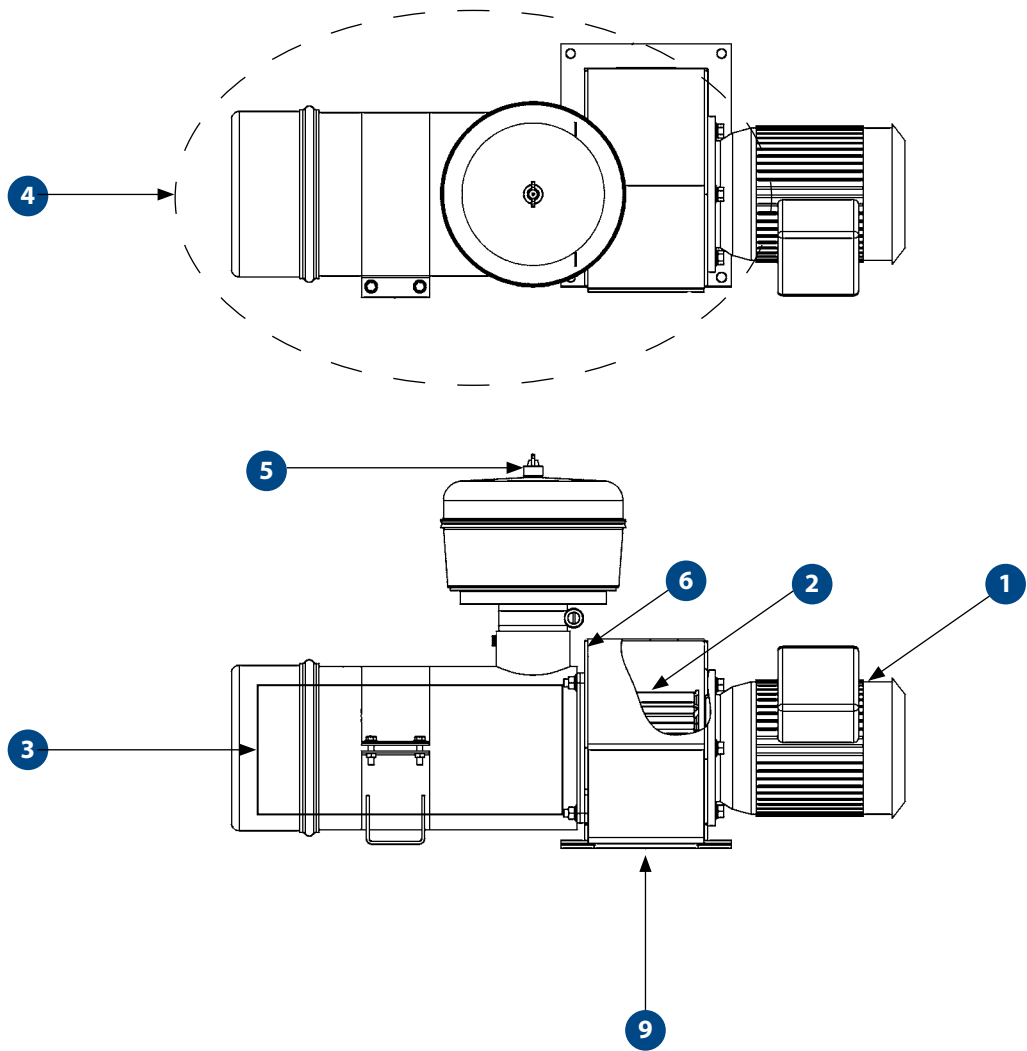
PART NO.	DESCRIPTION
AU460964	Pre-Cleaner 2.5" Inlet Small
AU460080	Filter Cartridge Endurance



FVV50M1

FRESH AIR PRESSURISER UNIT

FVV50M1
Fresh Air Pack MS Series AC



SPARE PARTS

PART NO.	DESCRIPTION	QTY
1 AU304150	MOTOR 0.55KW 415V 71 FL 2P	1
2 AU410606	BLOWER 120D X 89W X 14MM CW SINGLE INLET	1
3 AU460706	FILTER CARTRIDGE 133MM - STANDARD	1
4 AU460720	FILTER CYCLONE 6" METAL	1
5 AU460725	FILTER PRE-CLEANER 186MM - STANDARD	1
6 F1626010	GASKET FRESH AIR UNIT	1
7 F1626039	GASKET FRESH AIR UNIT	1

SPECIFICATIONS

	METRIC	IMPERIAL
Fan Speeds	1	1
Air Flow	50 l/s	106 CFM
Power Supply	415 VAC	415 VAC
Weight (nominal)	23.0 Kg	50.7 lbs
Dimension L X W X H	700mm X 210mm X 350mm	27.5in X 8.3in X 13.7in

MAINTENANCE

MONTHLY / 300 HOURS	
AU460080	FILTER CART ENDURANCE FVV50B
AU460706	FILTER CARTRIDGE 133MM - STANDARD (FOR UPGRATEFD UNIT)
AU460725	FILTER PRE-CLEANER 186MM - STANDARD
3 YEARS / 10,800 HOURS	
AU410606	BLOWER 120D X 89W X 14MM CW SINGLE INLET
AU460725	FILTER PRE-CLEANER 186MM - STANDARD

Please contact SIGMA for more information including details on an overhaul scope and interval.
Maintenance periods and scope are dependent on application and site conditions, and are to be used as a guide.

COMPANION ITEMS

PART NO.	DESCRIPTION
AU460964	Pre-Cleaner TS 2.5" Inlet Small (Old Version)
AU460080	Filter Cart Endurance FVV50B

- DRAGLINE & SHOVEL
- DRILL
- EXCAVATOR
- DOZER
- TRUCK
- WHEEL LOADER
- CONSTRUCTION
- UNDERGROUND EQUIPMENT
- INDUSTRIAL
- SMELTERS
- RAIL SPECIAL VEHICLES

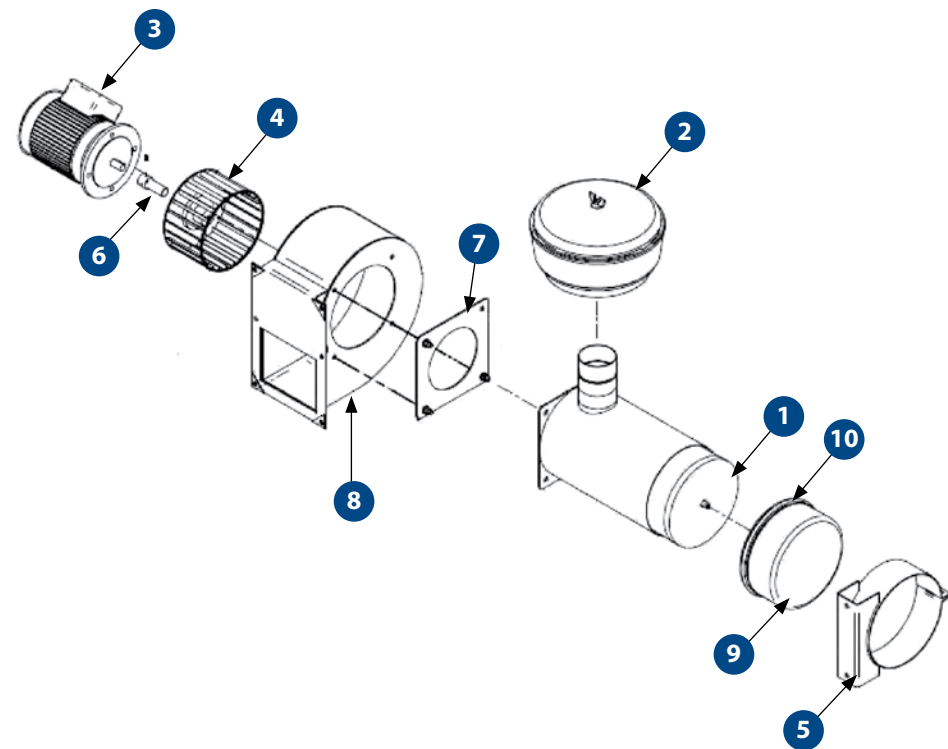


FVV80*

FRESH AIR PRESSURISER UNIT

FVV80MR1*
Fresh Air Pressuriser 80 l/s 415 VAC

* HVAC obsolete, spares support only



SPARE PARTS

PART NO.	DESCRIPTION	QTY
1	AU460734 FILTER ELEMENT SUIT FVV80 & FVV100	1
2	AU460728 FILTER PRE-CLEANER 186MM FULL VIEW	1
3	AU304150 MOTOR 0.55KW 415V 71 FL 2P	1
4	AU410525 BLOWER 178D X 76W X 19MM	1
5	AS162611 FILTER SUPPORT CLAMP ASSEMBLY	1
6	AU872011 SHAFT EXTENSION 14MM F X 19MM M	1
7	R1626026 GASKET FVV100 INLET 200MM X 200MM 140MM DIAMETER	1
8	AS162614 FAN HOUSING ASSEMBLY	1
9	AU460768 END CAP AU460762 RUBBER BAFFLE	1 1
10	AU460765 CLAMP ASSEMBLY	1

HEPA FILTRATION OPTION

PARTICULARS	DESCRIPTION
PART NO.	H0174977
HEPA GRADE	H13
TEST STANDARD	EN 1822 or equivalent
FILTRATION EFFICIENCY	*99.95% for particles diameter 0.3 µm
FILTER DIMENSION	152mm OD x 305 mm
*on qualified cabins	

SPECIFICATIONS

	METRIC	IMPERIAL
Fan Speeds	1	1
Air Flow	80 l/s	170 CFM
Power Supply	415 VAC	415 VAC
Current Draw	1.3 A	1.3 A
Maximum Ambient Temperature Range	46°C	115°F
Weight (nominal)	22.0 Kg	48.4 lbs
Dimension L X W X H	724mm X 333mm X 495mm	28.5in X 13.1in X 19.5in

MAINTENANCE

MONTHLY / 300 HOURS	
AU460734	FILTER ELEMENT SUIT FVV80 & FVV100
AU460081	FILTER CARTRIDGE ENDURANCE (FOR UPGRADED UNIT)
H0174977	HEPA CARTRIDGE (FOR UPGRADED UNIT)
3 YEARS / 10,800 HOURS	
AU460728	FILTER PRE-CLEANER 186MM FULL VIEW
AU410525	BLOWER 178D X 76W X 19MM CCW SINGLE INLET

Please contact SIGMA for more information including details on an overhaul scope and interval.
Maintenance periods and scope are dependent on application and site conditions, and are to be used as a guide.

COMPANION ITEMS

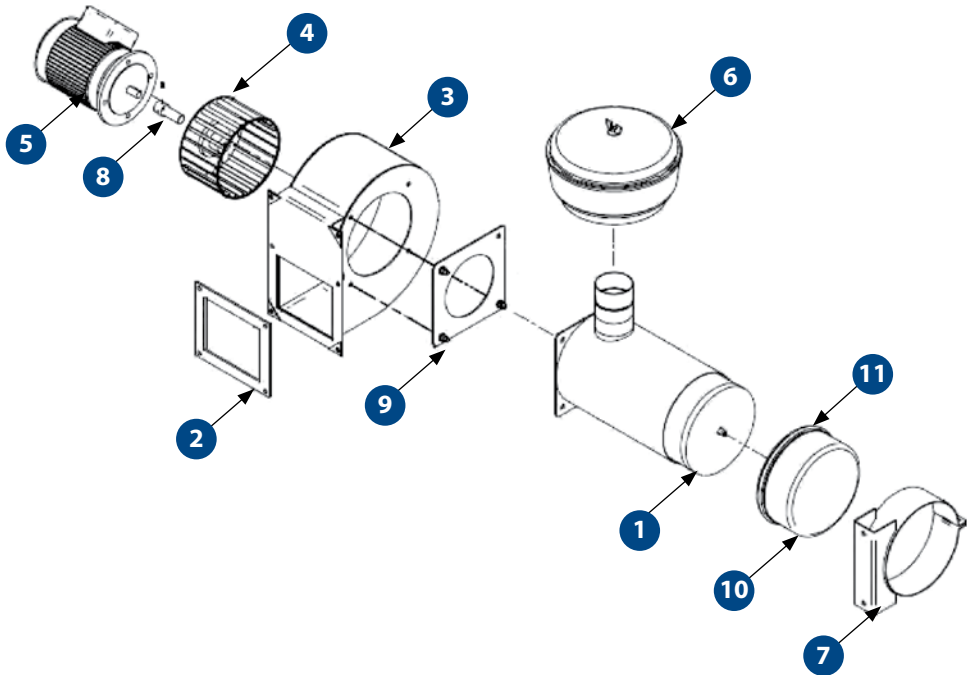
PART NO.	DESCRIPTION
AU460964	Pre-Cleaner TS 2.5" Inlet Small (Old Version)
AU460081	Filter Cartridge Endurance
H0174977	HEPA FILTER CARTRIDGE



FVV100

FRESH AIR PRESSURISER UNIT

FVV100MR1
Fresh Air Pressuriser 100 l/s 415 VAC



SPARE PARTS

PART NO.	DESCRIPTION	QTY
1	AU460734 FILTER ELEMENT SUIT FVV80 & FVV100	1
2	R1626027 GASKET OUTLET 206MM X 178MM	1
3	AS162608 FAN HOUSING	1
4	AU410520 BLOWER 178D X 102W X 19MM	1
5	UE800 MOTOR 0.37kW BEEW FL 2900RPM 240V (FVV100K1)	1
AU304150	MOTOR 0.55KW 415V 71 FL 2P (FVV100MR1)	1
6	AU460729 FILTER PRE-CLEANER 270MM - STANDARD	1
7	AS162611 FILTER SUPPORT CLAMP ASSEMBLY	1
8	AU872011 SHAFT EXTENSION 14MM F X 19MM M	
9	R1626026 GASKET FVV100 INLET 200MM X 200MM 140MM DIAMETER	1
AU460768	END CAP	1
AU460762	RUBBER BAFFLE	1
11	AU460765 CLAMP ASSEMBLY	1

HEPA FILTRATION OPTION

PARTICULARS	DESCRIPTION
PART NO.	H0174977
HEPA GRADE	H13
TEST STANDARD	EN 1822 or equivalent
FILTRATION EFFICIENCY	*99.95% for particles diameter 0.3 µm
FILTER DIMENSION	152mm OD x 305 mm
*on qualified cabins	

SPECIFICATIONS

	METRIC	IMPERIAL
Fan Speeds	1	1
Air Flow	100 l/s	212 CFM
Power Supply	415 VAC	415 VAC
Current Draw	1.3 A	1.3 A
Weight (nominal)	22.0 Kg	48.4 lbs
Dimension (L X W X H)	755mm X 333mm X 495mm	29.7in X 13.in X 19.5in

MAINTENANCE

MONTHLY / 300 HOURS	
AU460734	FILTER ELEMENT SUIT FVV80 & FVV100
AU460081	FILTER CARTRIDGE ENDURANCE
6 MONTHS / 1800 HOURS	
H0174977	H13 HEPA FILTER
3 YEARS / 10,800 HOURS	
AU460729	FILTER PRE-CLEANER 270MM - STANDARD
AU410520	BLOWER 178D X 102W X 19MM

Please contact SIGMA for more information including details on an overhaul scope and interval.
Maintenance periods and scope are dependent on application and site conditions, and are to be used as a guide.

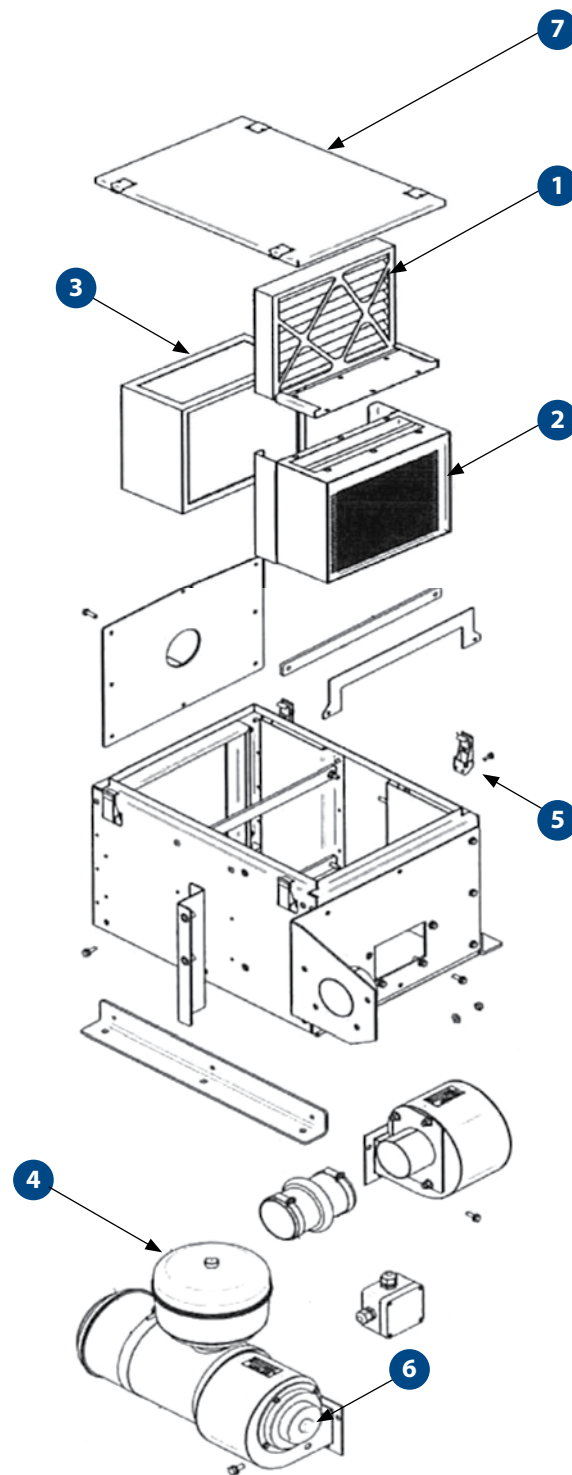
COMPANION ITEMS

PART NO.	DESCRIPTION
AU460965	Pre-Cleaner TS 2.5" Inlet Small (Old Version)
AU460081	Filter Cartridge Endurance
H0174977	HEPA FILTER CARTRIDGE



PVV50B2 PRESSURISER

PVV50B2
Fresh Air Multi Stage Filtration (HEPA) and Pressuriser
30 l/s 24V



SPARE PARTS

PART NO.	DESCRIPTION	QTY
1 AU460628	FILTER CARTRIDGE PLEAT 305MM X 305MM X 50MM	1
AS3505127	FILTRATION MODULE ASSEMBLY	1
AU480004	MEDIA ACT ALUMINA	1
AU480010	MEDIA ACT CARBON	1
AU480011	MEDIA IMPREG CARBON	1
3 AU460863	FILTER 305MM X 305MM X 149MM METAL CASE (HEPA FILTER)	1
4 AU460963	PRE CLEANER TS 3" INLET SMALL	1
5 UC310	CATCH TOGGLE OVERCENTRE SS	4
6 H0175266	MOTOR 70W 24VDC ASSEMBLY	2
7 AS5242124	LID ASSEMBLY	1
AU460706	FILTER ASSEMBLY ROUND 133MM - STANDARD	1
AU460083	FILTER CART ENDURANCE FVV50B2	1
AU410337	BLOWER 120D x 89W x 5/8 COUNTER CLOCKWISE SINGLE INLET	2
AU862211	SEAL RUBBER	2
S3750100	SEAL GASKET MOTOR	1
S3750101	SEAL GASKET CANISTER	1
UC369	CATCH STRIKER STAINLESS STEEL	4
AU635405	TERMINAL BLOCK	1
AU460083	FILTER CARTRIDGE ENDURANCE FOR EB9P4X	1
H0056158	CLAMP ASSEMBLY 168MM INTERNAL DIAMETER	1
H0056157	COVER ASSEMBLY	1
AU870001	MOUNTING BAND AIR CLEANER 6.5" DIAMETER	1

HEPA FILTRATION

PARTICULARS	DESCRIPTION
PART NO.	AU460863
HEPA GRADE	H13 / US HEPA / AS4260 (GRADE 2)
TEST STANDARD	EN 1822 or equivalent
FILTRATION EFFICIENCY	*99.95% for particles diameter 0.3 µm
FILTER DIMENSION	305mm x 305mm x 149mm

*on qualified cabins

SPECIFICATIONS

	METRIC	IMPERIAL
Fan Speeds	1	1
Fresh Air	30 l/s	64 CFM
Power Supply	24V	24V
Current Draw	6 A	6 A
Weight (nominal)	60.0 Kg	132.0 lbs
Dimension L X W X H	695mm X 364mm X 520mm	27.4in X 14.3in X 20.5in

MAINTENANCE

3 MONTHS / 900 HOURS	
AU4600083	FILTER CARTRIDGE ENDURANCE FOR PVV50B2
AU460628	FILTER CARTRIDGE PLEAT 305MM X 305MM X 50MM
AU480004	MEDIA ACT ALUMINA
AU480010	MEDIA ACT CARBON
AU480011	MEDIA IMPREG CARBON
ANNUAL / 3,600 HOURS	
AU460863	FILTER 305MM X 305MM X 149MM METAL CASE
H0175266	MOTOR 70W 24VDC ASSEMBLY
3 YEARS / 10,8000 HOURS	
AU460963	PRE CLEANER TS 3" INLET SMALL
AU410337	BLOWER 120D x 89W x 5/8 COUNTER CLOCKWISE SINGLE INLET

Please contact SIGMA for more information including details on an overhaul scope and interval.
Maintenance periods and scope are dependent on application and site conditions, and are to be used as a guide.

COMPANION ITEMS

PART NO.	DESCRIPTION
KNHV90007	Field Service Kit PVV50 24VDC – Excl Med
KNHV90073	Generic site install kit

DRAGLINE & SHOVEL

DRILL

EXCAVATOR

DOZER

TRUCK

WHEEL LOADER

CONSTRUCTION

UNDERGROUND EQUIPMENT

INDUSTRIAL

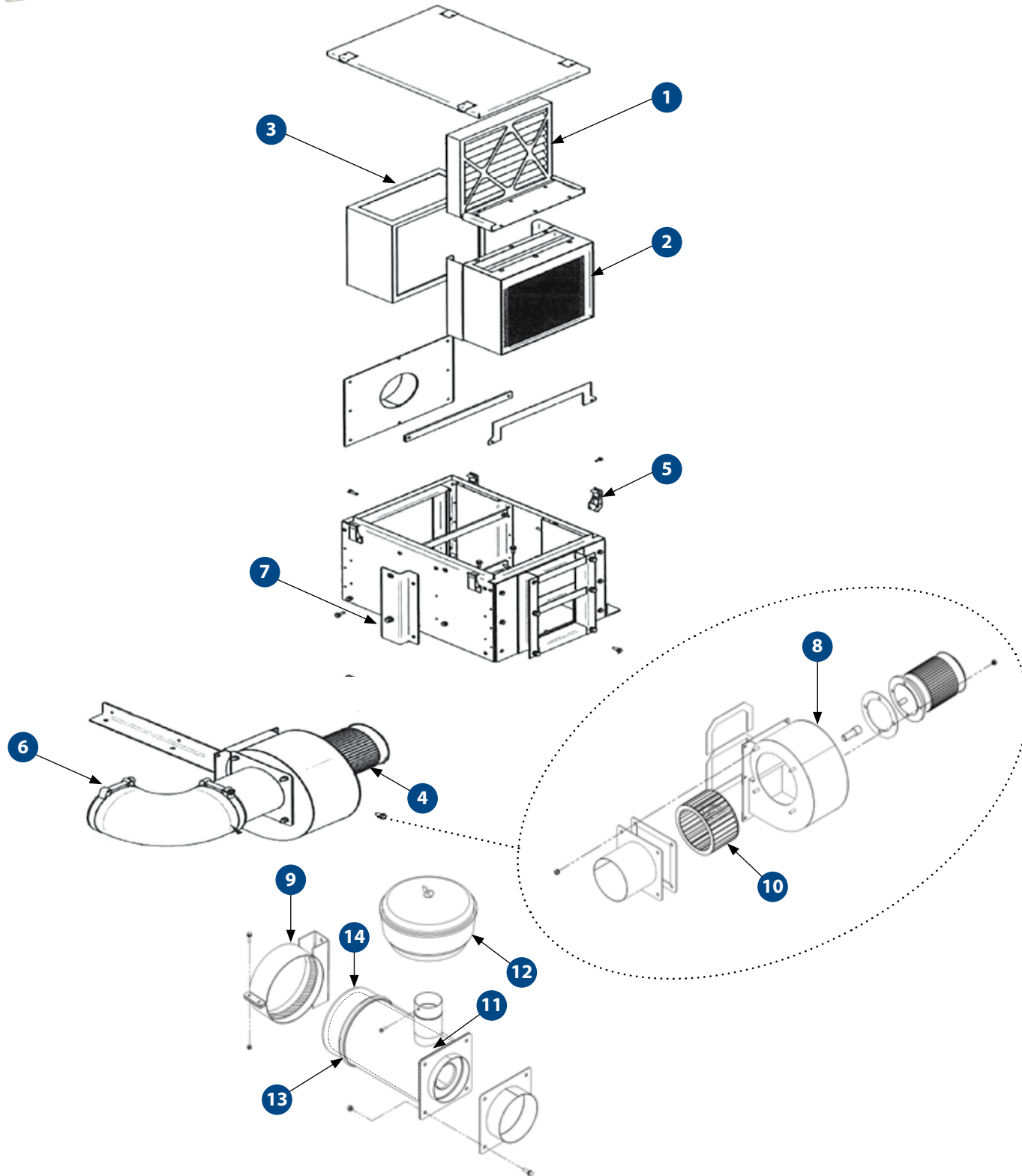
SMELTERS

RAIL SPECIAL VEHICLES



PVV50M2 PRESSURISER

PVV50M2
Fresh Air Multi Stage Filtration (HEPA) and
Pressuriser 50 l/s 415 VAC



SPARE PARTS

PART NO.	DESCRIPTION	QTY
1 AU460628	FILTER CARTRIDGE PLEAT 305MM X 305MM X 50MM	1
AS3505127	FILTRATION MODULE ASSEMBLY	1
AU480004	MEDIA ACT ALUMINA	1
AU480010	MEDIA ACT CARBON	1
AU480011	MEDIA IMPREG CARBON	1
3 AU460863	FILTER 305MM X 305MM X 149MM METAL CASE (HEPA FILTER)	1
4 AU304150	MOTOR 0.55KW 415V 71 FL 2P	1
5 UC310	CATCH TOGGLE OVERCENTRE SS	4
6 UC265	ELBOW RUBBER 90DEG 6"	1
7 AS3505146	CANISTER MOUNTING BRACKET ASSEMBLY	1
8 AS162608	FAN HOUSING	1
9 AS162611	FILTER SUPPORT CLAMP ASSEMBLY	1
10 AU410520	BLOWER 178D X 102W X 19MM CCW SINGLE INLET	1
11 AU460734	FILTER ELEMENT SUIT FVV80 & FVV100 (STD)	1
AU460081	FILTER CARTRIDGE ENDURANCE FVV100 (OPT)	1
12 AU460729	FILTER PRE-CLEANER 270MM	1
13 AU460765	CLAMP ASSEMBLY	1
14 AU460762	RUBBER BAFFLE	1
AU460768	END CAP	1
AU862121	GASKET OUTLET 206MM X 178MM	1
AU862211	SEAL RUBBER	2
AU872011	SHAFT EXTENSION 14MM F X 19MM M	1
R1626026	GASKET FVV100 INLET 200MM X 200MM 140MM DIAMETER	1
UC266	CLAMP SUIT UC265	2

HEPA FILTRATION

PARTICULARS	DESCRIPTION
PART NO.	AU460863
HEPA GRADE	H13 / US HEPA / AS4260 (GRADE 2)
TEST STANDARD	EN 1822 or equivalent
FILTRATION EFFICIENCY	99.95% for particles diameter 0.3 µm
FILTER DIMENSION	305mm x 305mm x 149mm

SPECIFICATIONS

	METRIC	IMPERIAL
Fan Speeds	1	1
Fresh Air	50 l/s	106 CFM
Power Supply	415 VAC	415 VAC
Current Draw	6 A	6 A
Weight (nominal)	60.0 Kg	132.0 lbs
Dimension L X W X H	695mm X 364mm X 520mm	27.4in X 14.3in X 20.5in

MAINTENANCE

3 MONTHS / 900 HOURS	
AU460081	FILTER CARTRIDGE ENDURANCE
AU460628	FILTER CARTRIDGE PLEAT 305MM X 305MM X 50MM
AU480004	MEDIA ACT ALUMINA
AU480010	MEDIA ACT CARBON
AU480011	MEDIA IMPREG CARBON
ANNUAL / 3,600 HOURS	
AU460863	FILTER 305MM X 305X149MM METAL CASE
3 YEARS / 10,800 HOURS	
AU460729	FILTER PRE-CLEANER 270MM
AU410520	BLOWER 178D X 102W X 19MM CCW SNGLE INLET

Please contact SIGMA for more information including details on an overhaul scope and interval.
Maintenance periods and scope are dependent on application and site conditions, and are to be used as a guide.

COMPANION ITEMS

PART NO.	DESCRIPTION
KNHV90073	Generic site install kit



KNORR BREMSE AUSTRALIA Pty Ltd

Incorporating SIGMA Air Conditioning

23 – 29 Factory Street

Granville NSW 2142

Australia

Customer service: 1300 643 643

(+61) 2 8863 6500

Email: mid.aus@sigma-hvac.com

W W W . S I G M A - H V A C . C O M

Australia:

Factory St, Granville, Sydney, Australia

Boundary Road, Darra, Brisbane, Australia

Enterprise Street, Paget, Mackay, Australia

Colin Jamieson Drive Welshpool, Australia

United States:

Arthur Peck Drive, Westminster MD, USA

India:

Delhi-Mathura Road, Palwal, Haryana, Delhi, India

China:

Jingui Road, Wuxi Jiangsu Province, China



SIGMA

AUTHORISED SIGMA
DEALER



SIGMA

BUILT FOR THE TOUGHEST AIR CONDITIONS